



Biomass Silo Systems

W1424 - 14 Ton Pellet Store

This rectangular pellet store is manufactured from galvanised steel and has a 2m X 4m footprint which allows users to benefit from increased capacity without the need to increase the height of the pellet store.

A range of different silo bases can be manufactured either to suit our own extraction options or alternatively to integrate third party extraction systems when required.

Product Code	W1424
Footprint	2m x 4m
Height	4.164m
Volume	24.959m ³
Useful Capacity	16.223 Tons
Flat Packed Dimensions	(L)2500mm x (W)1250mm x (H)1200mm
Empty Weight	931kgs
Approx Assembly Time	12 hours for two people

Standard Features



Bulk Delivery Connections

Filling and ventilation pipework with delivery connections

Bag Filling Panel

For bag filling and periodic cleaning and maintenance

Inspection Window

For checking pellet levels

Manual Extraction Chute

For withdrawing pellets and can be positioned on any side

Dust Removal Panel

For removal of dust from silo

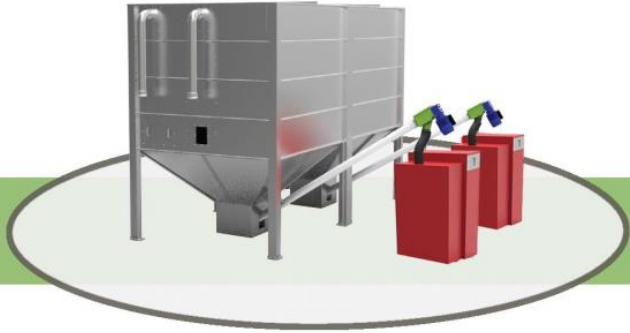
Feed Shut Off Slide

To isolate feedbox during cleaning filling or maintenance

Feed Outlet

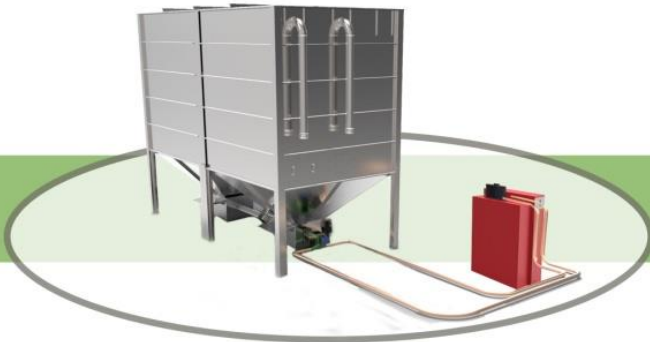
Choice of standard auger or vacuum feed outlets

Feed Options



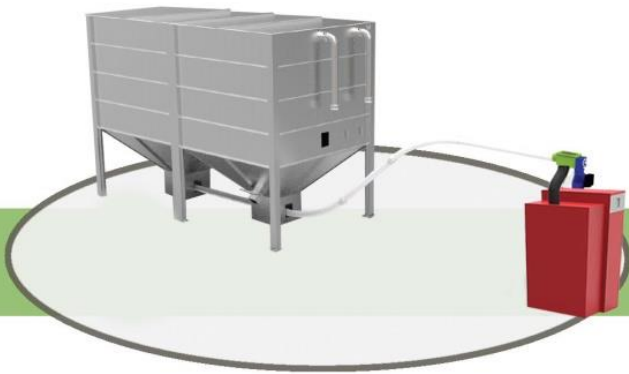
Separate Feed Outlets

Both feed outlets are used to feed separate boilers either with two augers or two vacuum connections



Vacuum Auger

An Auger transports pellets from two or more feedboxes to a vacuum extraction point.



Flexible Auger Direct to Boiler

A flexible auger system collects pellets from both outlets and feeds direct to the auger

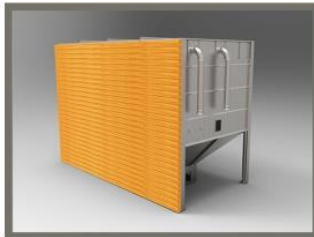
Optional Extras

Colour Coated Finishes



Gives the product a 30 year outdoor life

Timber Cladding Kits



Treated timber and timber effect steel cladding panels

V-Shaped Base



V-Shaped base to be used with third party troughs